

AeroChamber Plus Flow-Vu[®]

Anti-Static Valved Holding Chamber

Youth Mouthpiece



Trudell Medical UK Limited

Distributed in the United Kingdom by:

Trudell Medical UK Limited

info@trudellmedical.co.uk / 01256 338400



Manufactured by: Trudell Medical International
725 Baransway Drive, London, Ontario, Canada N5V 5G4

EC REP

Emergo Europe
Prinsessegracht 20
2514 AP The Hague
The Netherlands



62860108509016

108635-001 Rev B. * trade-marks and registered trade-marks of
Trudell Medical International. © TMI 2019. All rights reserved.



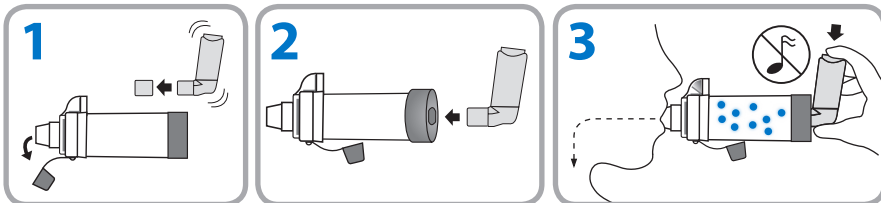
INTENDED USE

This chamber is intended to be used along with a metered dose inhaler to deliver aerosol medication to your lungs as prescribed by your healthcare provider. If you have questions about the performance or use of this product, please contact your healthcare provider.

BEFORE EACH USE

This chamber can be used directly out-of-package. Ensure these instructions and the instructions supplied with the inhaler have been read and are kept available at all times. Carefully examine the chamber and replace immediately if it is damaged or has missing parts.

HOW TO USE YOUR CHAMBER



1 Remove caps from the inhaler and chamber. **Shake** the inhaler immediately before use as per the instructions supplied with it.

2 Insert the inhaler into the backpiece of the chamber. Put mouthpiece into mouth and close lips around it to ensure an effective seal.

3 Exhale then **press** the inhaler once at the beginning of inhalation. **Inhale** slowly and deeply through the chamber until a full breath has been taken. Hold your breath for 5–10 seconds before exhaling. **OR** Exhale then **press** the inhaler once at the beginning of a slow inhalation. **Breathe** in and out through the chamber for 2–3 breaths keeping lips sealed around chamber mouthpiece.

Notes



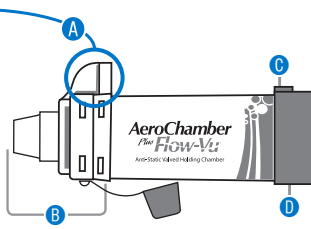
SLOW DOWN if you hear the whistle sound (it means you are inhaling too quickly).



If someone is helping you they can use the **Flow-Vu[®]** Inhalation Indicator to ensure a good seal, coordinate pressing the inhaler with inhalation and to count the number of breaths taken. The **Flow-Vu[®]** Indicator moves toward you as you inhale and only moves if you have a proper seal.

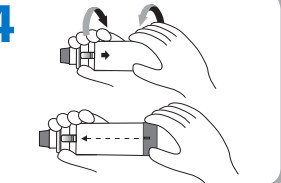
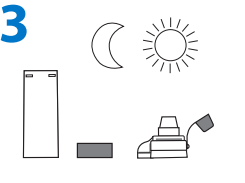
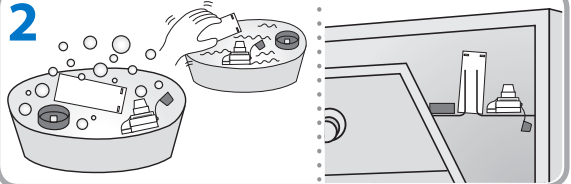
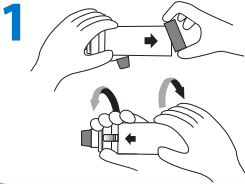
Administer one (1) puff at a time. Follow instructions supplied with the inhaler on how long to wait before repeating.

Visit www.aerochamber.com for instructional videos



- A **Flow-Vu*** Inhalation Indicator
- B Frontpiece
- C Alignment Feature
- D Backpiece

CLEANING INSTRUCTIONS



This chamber can be used right out-of-package and then cleaned weekly.

- 1** Remove the backpiece (D). To detach the frontpiece (B), twist chamber as shown. Remove mouthpiece cap.
- 2** Soak the parts for 15 minutes in a mild solution of liquid dish detergent and lukewarm clean water. Agitate gently. Rinse parts in clean water. **OR** Place parts in top rack of dishwasher. Ensure product is securely placed face up. Run the dishwasher on a normal or light cycle and avoid heated dry.
- 3** Shake out excess water and allow to air dry in a vertical position. Ensure parts are dry before reassembly.
- 4** To reassemble, fit the frontpiece on the end of the chamber and twist firmly until securely locked into position. The cap should always be placed on the mouthpiece when the chamber is not in use. Center the alignment feature (C) on the backpiece with the **Flow-Vu*** Inhalation Indicator (A), as shown. Press firmly to attach the backpiece.

Notes

- Do not boil or sterilize.
- Product should be replaced after 12 months of use.
- This product contains no latex.
- Do not share this medical device.
- If you notice medication build-up in your chamber, wash the inside of the chamber gently with a soft cloth.
- Dishwashing with overly dirty dishes is not recommended.
- If cleaning in a dishwasher use a rinse aid.

⚠ Cautions

- Do not leave the chamber unattended with children. This is not a toy.
- **Product may be permanently damaged if boiled, sterilized or cleaned in a dishwasher at a temperature above 70°C.**



For optimum performance you should replace your chamber every 12 months.