



**2 in 1**  
Chamber +  
Protective Case

**Aero2go™**  
Chamber

Anti-Static Valved Holding Chamber

[www.aerochamber2go.com](http://www.aerochamber2go.com)

## INTENDED USE

The **AeroChamber2go™** chamber is intended to be used with most pressurized metered dose inhalers to deliver aerosolized medication to the lungs.

If you have any questions, please contact your healthcare provider.

## HOW IT WORKS

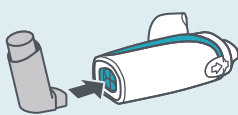
When you press the inhaler, the chamber holds the medication suspended. This allows you more time to inhale and helps to deliver the medication to the lungs, where it is needed.

## USING YOUR CHAMBER



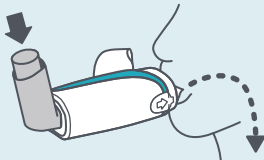
### Shake

inhaler immediately before use (remove cap)



### Insert

inhaler into back of the chamber



### Press

inhaler as you start to breathe in **slowly and deeply**

### Notes

- Ensure these instructions and the instructions supplied with the inhaler have been read and are kept available at all times.
- Take 1 puff at a time.
- The chamber should be replaced after 12 months of use.

### Warning

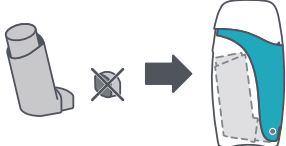
- Carefully examine the chamber ensuring no debris is inside.
- Replace immediately if the chamber is damaged or has missing parts.

### Tips

- For best results, hold your breath for as long as it feels comfortable before exhaling. This improves the effectiveness of the medicine.
- If you are not able to hold your breath, you can simply press the inhaler and breathe normally in and out 2 times through the chamber to inhale your medicine.

## 2 IN 1 CHAMBER + PROTECTIVE CASE FOR YOUR INHALER

Your inhaler can be stored inside the chamber.

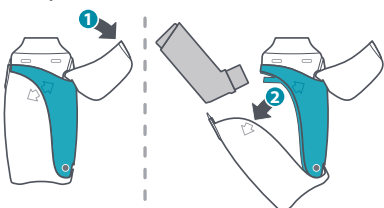


- Remove the cap from the inhaler when storing it inside the chamber.
- Chamber is enclosed on both ends helping to prevent debris from entering.
- Designed to fit most commonly prescribed inhalers. (Note: inhaler is sold separately)

### Caution

- Does not fit round inhalers such as Aiomir<sup>†</sup>, Qvar<sup>†</sup> or Alvesco<sup>†</sup>.

### To open chamber:



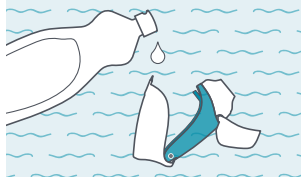
Reverse order to close.

### Warning

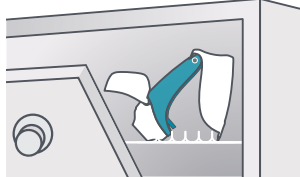
- Ensure you are comfortable with opening and closing the chamber before storing your inhaler inside.

## CLEANING YOUR CHAMBER

The chamber can be used directly out of the package and should be cleaned weekly.



OR



**1** Lift the cap and open the chamber to remove the inhaler.

**2** Wash the chamber in warm, clean water with liquid dish detergent, agitating gently. Rinse in clean water.

**OR** Place on top rack of dishwasher as shown. Run the dishwasher on a normal or light cycle. Do not heat dry.

**3** Shake out excess water and allow to air dry. If you require the chamber immediately, dry gently with a clean dish towel.

### Notes

- If you notice medication build-up in your chamber, wash the inside of the chamber gently with a clean soft cloth.
- Do not boil or sterilize.
- Dishwashing with overly dirty dishes is not recommended.
- If cleaning in a dishwasher, use a rinse aid.
- For cleaning the inhaler, follow the instructions supplied with the inhaler.

### Caution

- Product may be permanently damaged if boiled, sterilized or cleaned in a dishwasher at a temperature above 70°C.



Scan for instructional videos



Designed and Developed in Canada with the help of people like you



Chambers should be replaced every 12 months for optimum performance.

Manufactured by /  
Fabriqué par :



**TRUDELL MEDICAL**  
INTERNATIONAL

725 Baransway Drive, London,  
Ontario, Canada N5V 5G4  
T +1-519-455-7060  
F +1-519-455-6478  
info@trudellmed.com