

AeroChamber[®] Plus[®]

Valved Holding Chamber



Distributed in the United Kingdom by:
Trudell Medical UK Limited
info@trudellmedical.co.uk / 01256 338400

UK Responsible Person: Trudell Medical UK Limited
Grove House, Lutyens Close, Chineham Court,
Basingstoke UK RG24 8AG

Trudell Medical International
725 Baransway Drive, London, Ontario, Canada, N5V 5G4

EMERGE REP **Emergo Europe**
Westervoortsedijk 60, 6827 AT Arnhem, The Netherlands

INTENDED USE

This chamber is intended to be used by patients who are prescribed a metered dose inhaler to deliver the aerosol medication from the inhaler to your lungs.

The clinical benefit of chambers is to improve the coordination of inhaling your medication. This is achieved by holding the medication, allowing you more time to inhale while filtering out the larger particles that would not reach your lungs.

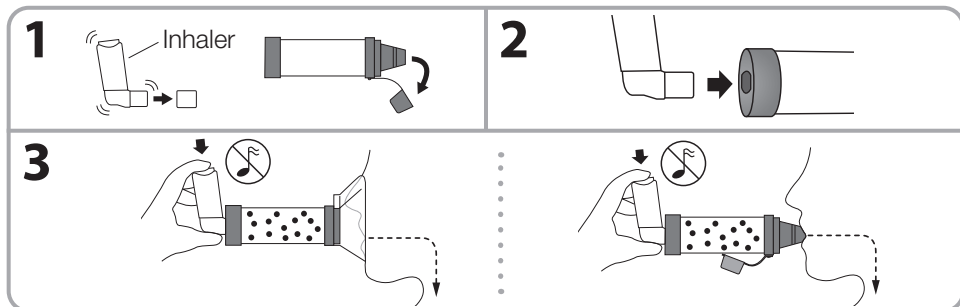
If you have any concerns regarding the use of the chamber or its delivery of your inhaler medication, please consult a healthcare professional.

BEFORE EACH USE

Ensure these instructions and the instructions supplied with the inhaler have been read and are kept available at all times. Carefully look into the chamber. If there is any visible dust or other debris inside, then clean the chamber. Replace immediately if it is damaged or has missing parts.

HOW TO USE YOUR CHAMBER

The chamber must be cleaned before first use as per the cleaning instructions. For preparation of the inhaler, follow the instructions supplied with the inhaler.



1 Remove caps from the inhaler and chamber. Shake the inhaler immediately before use as per the instructions supplied with it.

2 MASK: Insert the inhaler into the backpiece of the chamber. Apply mask to face and ensure an effective seal.

MOUTHPIECE: Insert the inhaler into the backpiece of the chamber. Put mouthpiece into mouth and close your lips around it to ensure an effective seal.

3 MASK: Exhale then press the inhaler once at the beginning of a slow inhalation. Hold mask in place and breathe in and out through the chamber for 5-6 breaths.

MOUTHPIECE: Exhale then press the inhaler once at the beginning of a slow inhalation. Inhale slowly and deeply through the chamber until a full breath has been taken. Hold your breath for 5-10 seconds before exhaling. **OR** Exhale and press the inhaler once at the beginning of a slow inhalation. Breathe in and out through the chamber for 2-3 breaths keeping lips sealed around chamber mouthpiece.

Notes



- Inhalation — **SLOW DOWN** if you hear the whistle sound, it means you are inhaling too quickly (on adult models).
- Administer one (1) puff at a time. Follow instructions supplied with the inhaler on how long to wait before repeating.
- Any serious incident that has occurred in relation to the device should be reported to the manufacturer and the competent authority of the Member State or the MHRA.

⚠ Cautions

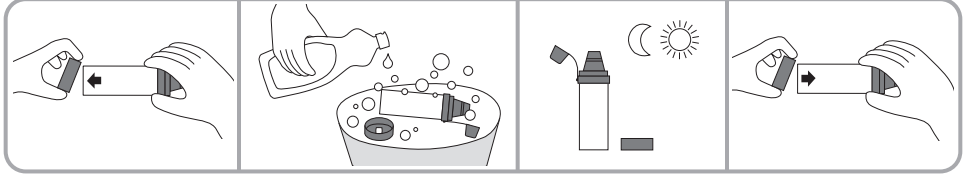
- Do not use with Dry Powder Inhalers or Nebulizers. The chamber has not been designed to deliver these medications so you may not get the proper dose.
- Failure to follow instructions may affect medication delivery or cause inhalation issues

⚠ Warnings

- Do not leave the device unattended with children. Contains small parts that can cause choking.

HOW TO CLEAN YOUR CHAMBER

Clean **AeroChamber Plus**® chamber only as per instructions, before first use then weekly. (Mouthpiece model shown as an example)



- 1 Remove back piece only. (Do not remove mask).
- 2 Soak the parts for 15 minutes in a mild solution of liquid dish detergent and lukewarm clean water. Agitate gently. Do not rinse the chamber – leaving a very thin film of detergent enhances the performance of the chamber.
- 3 Shake out excess water and allow to air dry in a vertical position. **Do not rub dry.**
- 4 Replace backpiece when unit is completely dry.

Notes

- Product should be replaced after 12 months of use.
- Product is free of Bisphenol A, Phthalates, Latex, Lead and PVC.
- If you notice medication build-up in your chamber, wash the inside of the chamber gently with a soft cloth.
- Put cap back on the mouthpiece and store in a clean, dry area when not in use.
- For cleaning of the inhaler, follow the instructions supplied with the inhaler
- The chamber device can be disposed of with domestic waste unless this is prohibited by local regulations on waste disposal.

⚠ Cautions

- Do not boil or sterilize. Product may be permanently damaged.



Learn more about

AeroChamber
Plus®



0 – 18 months
Infant mask

REF 101503



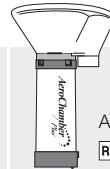
1–5 years
Child mask

REF 101502



5+ years
Mouthpiece

REF 101501



Adult mask

REF 101504

MD

Medical Device

P/N

Part Number

Qty

Quantity

UDI

Unique Device
Identifier



Single Patient –
Multiple Use



This product
contains no latex.



For optimum performance
replace after 12 months.